



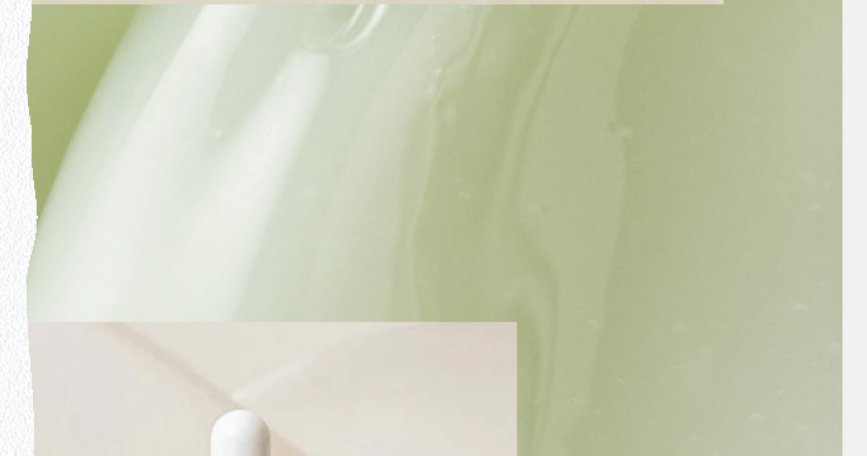
조선
미녀

Beauty of Joseon

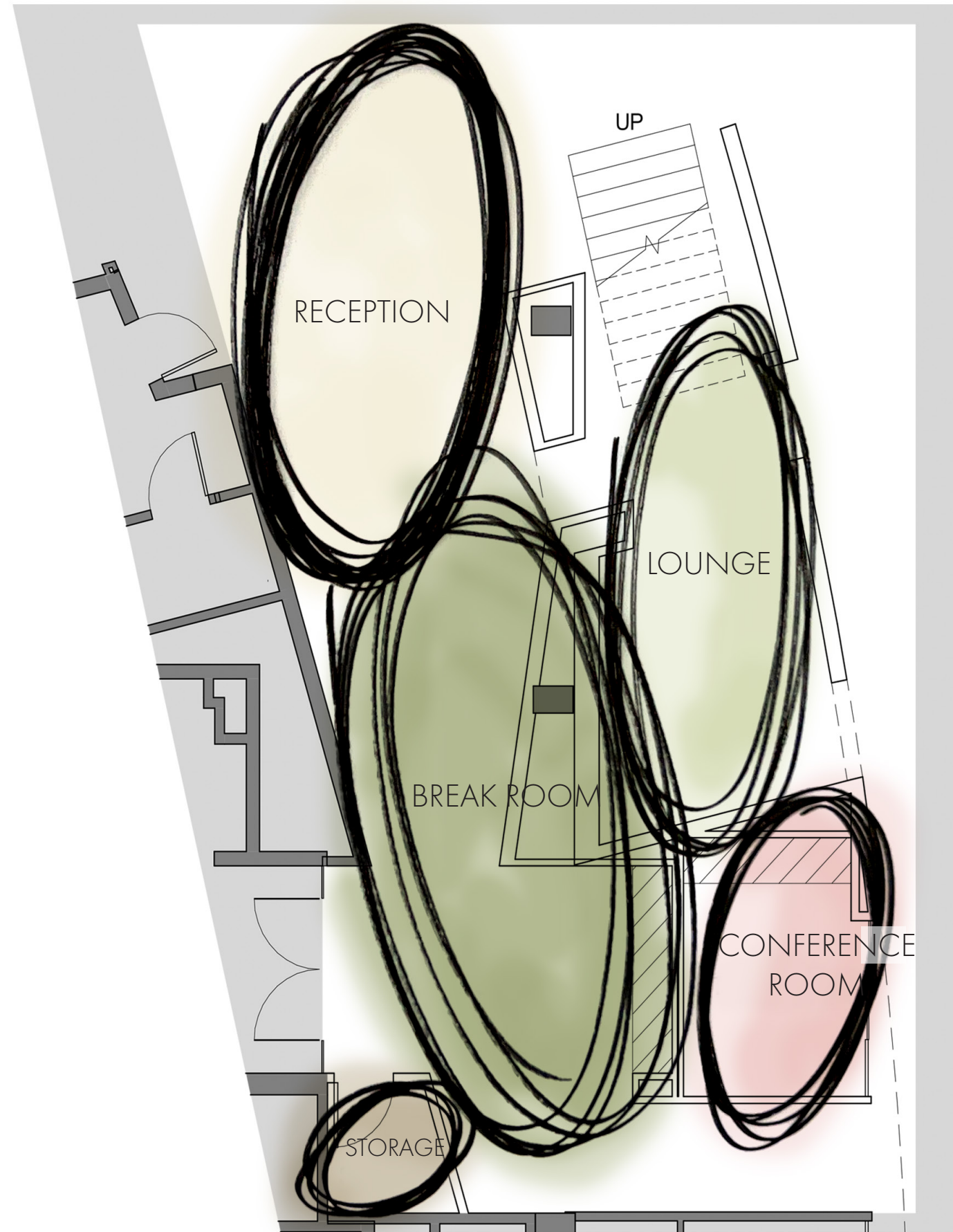
Beauty of Joseon is a Korean skincare brand that focuses on using **natural ingredients** and **traditional Korean beauty and skincare practices** to promote healthy, glowing skin.

All of the products are formulated without parabens, sulfates, or other harmful chemicals, making them gentle enough for even the most sensitive skin.

We believe that everyone deserves to have **healthy, radiant skin**, and that's why we're so passionate about sharing the Beauty of Joseon brand with our customers.



BUBBLE DIAGRAM



FLOORPLAN



1 PROTO ROUND SIDE TABLE



2 ANDREU WORLD ALYA EXECUTIVE 1489



3 ANDREU WORLD ADELA REX CHAIR



4 SCANDINAVIAN SPACES ROUND CAFE TABLE



5 EMECO ALFI LOW BACK COUNTER STOOL



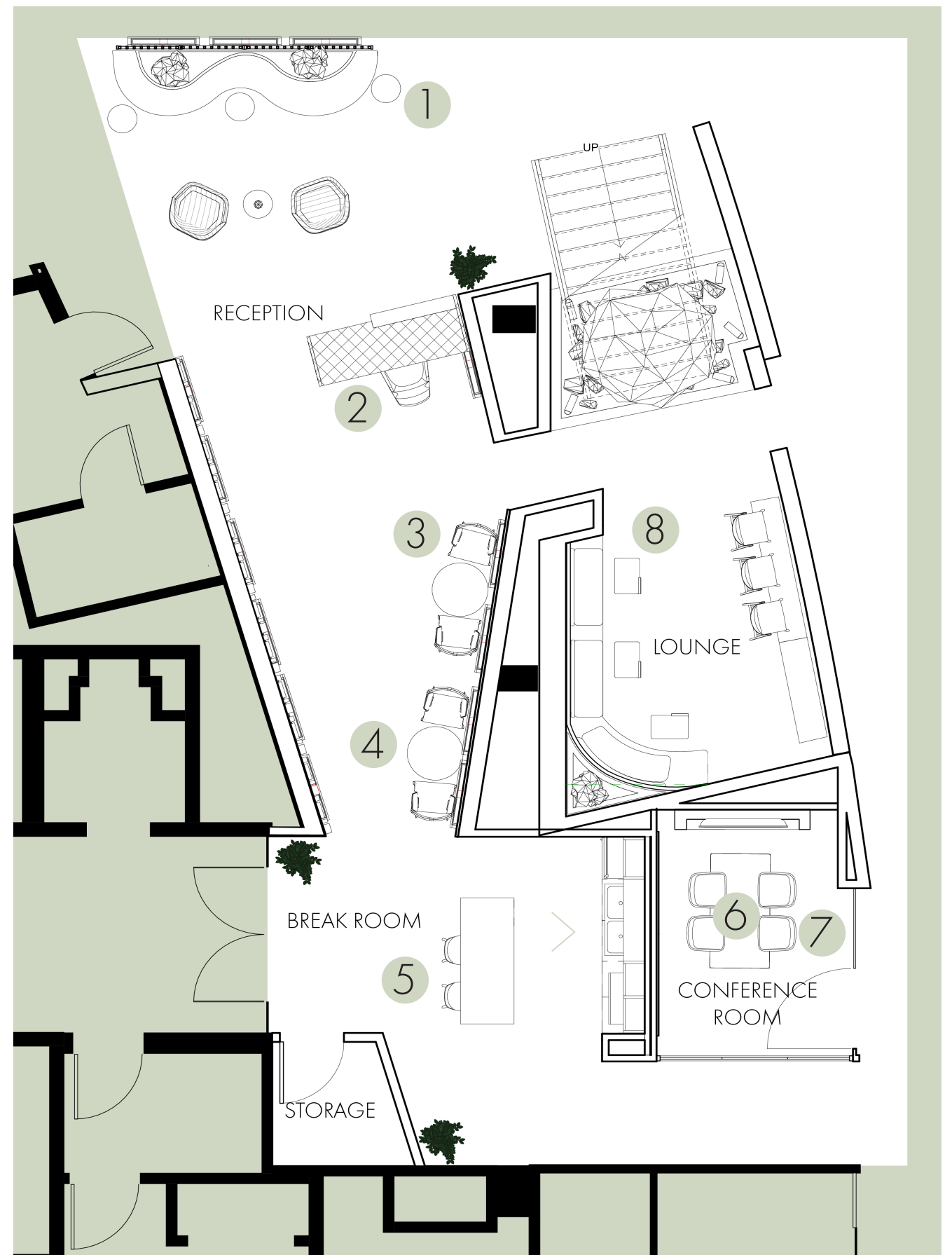
6 KNOLL MUUTO 70/70 TABLE



7 KNOLL MUUTO FIBER ARMCHAIR



8 HIGHTOWER KONA LAPTOP TABLE



REFLECTED CEILING PLAN



1 COIL ONYX PENDANT



2 LIGHTART ACOUSTIC ECHO



3 LIGHTART TUCK PENDANT



4 RECESSED CAN LIGHTING



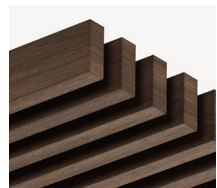
5 LIGHTART LA 2 ESSENTIALS QUAD



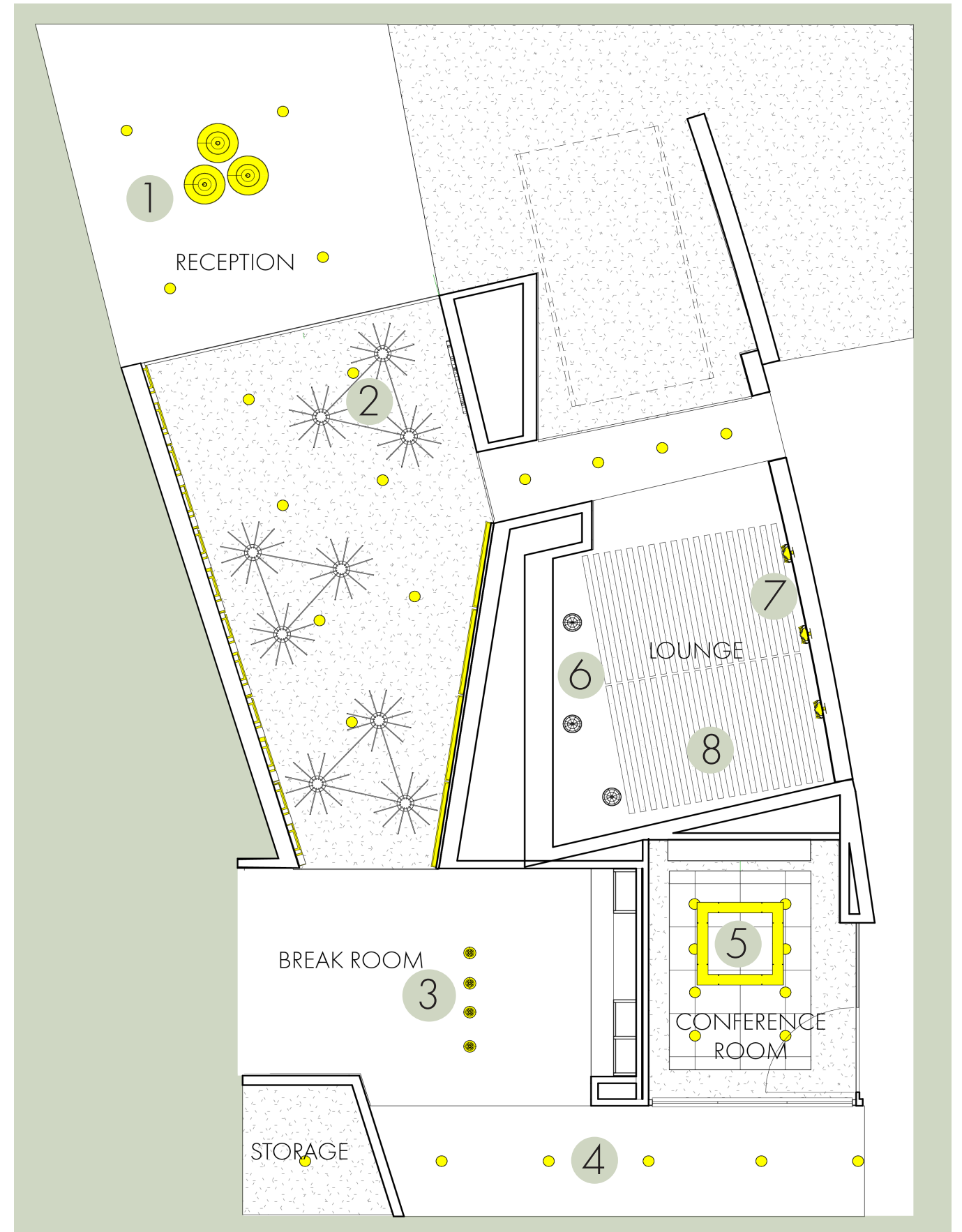
6 BOLA SPHERE PENDANT



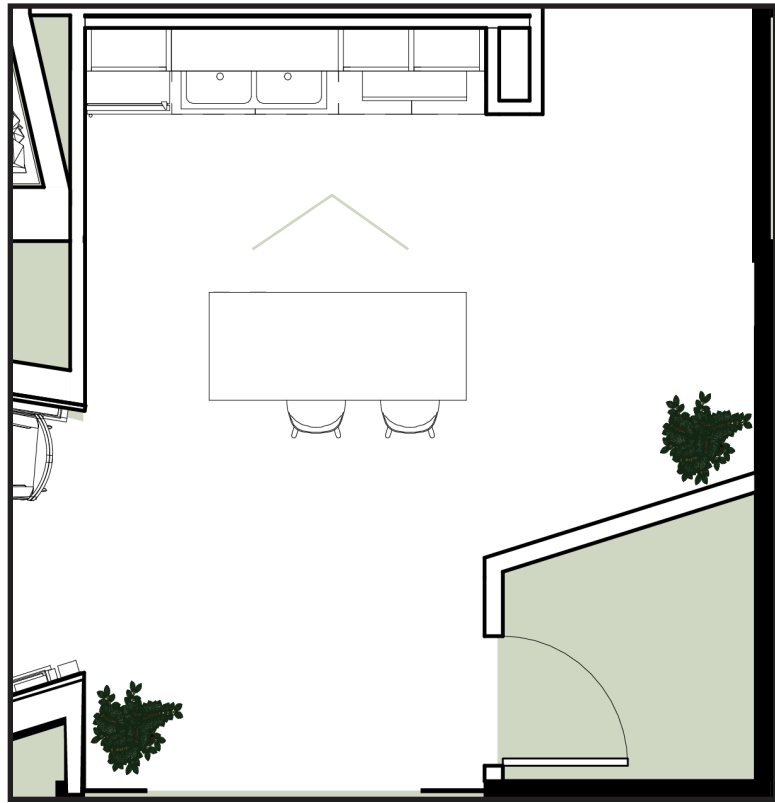
7 LIGHTART LAYERED SCONCE



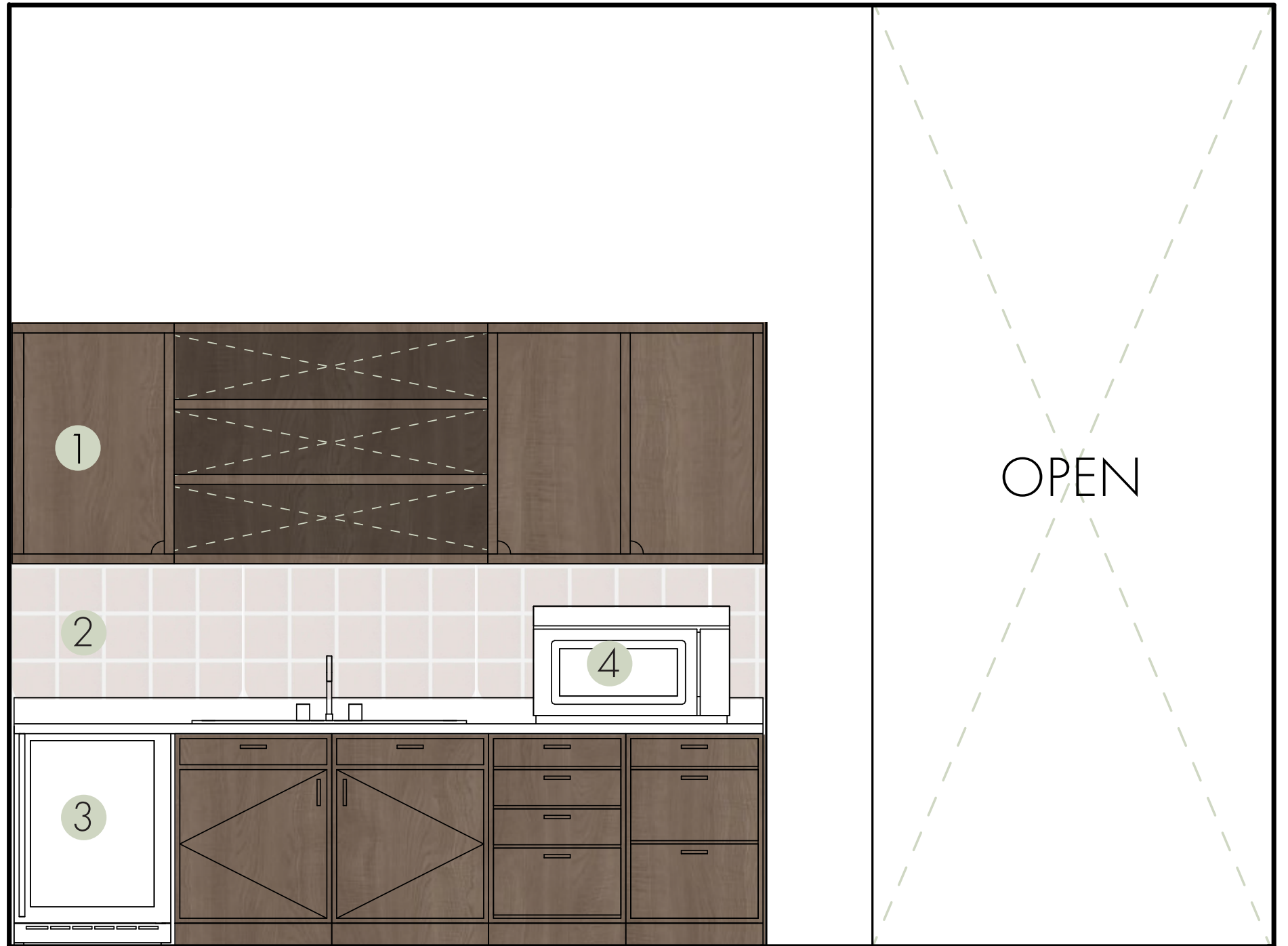
8 TURF BAFFLE BEAM



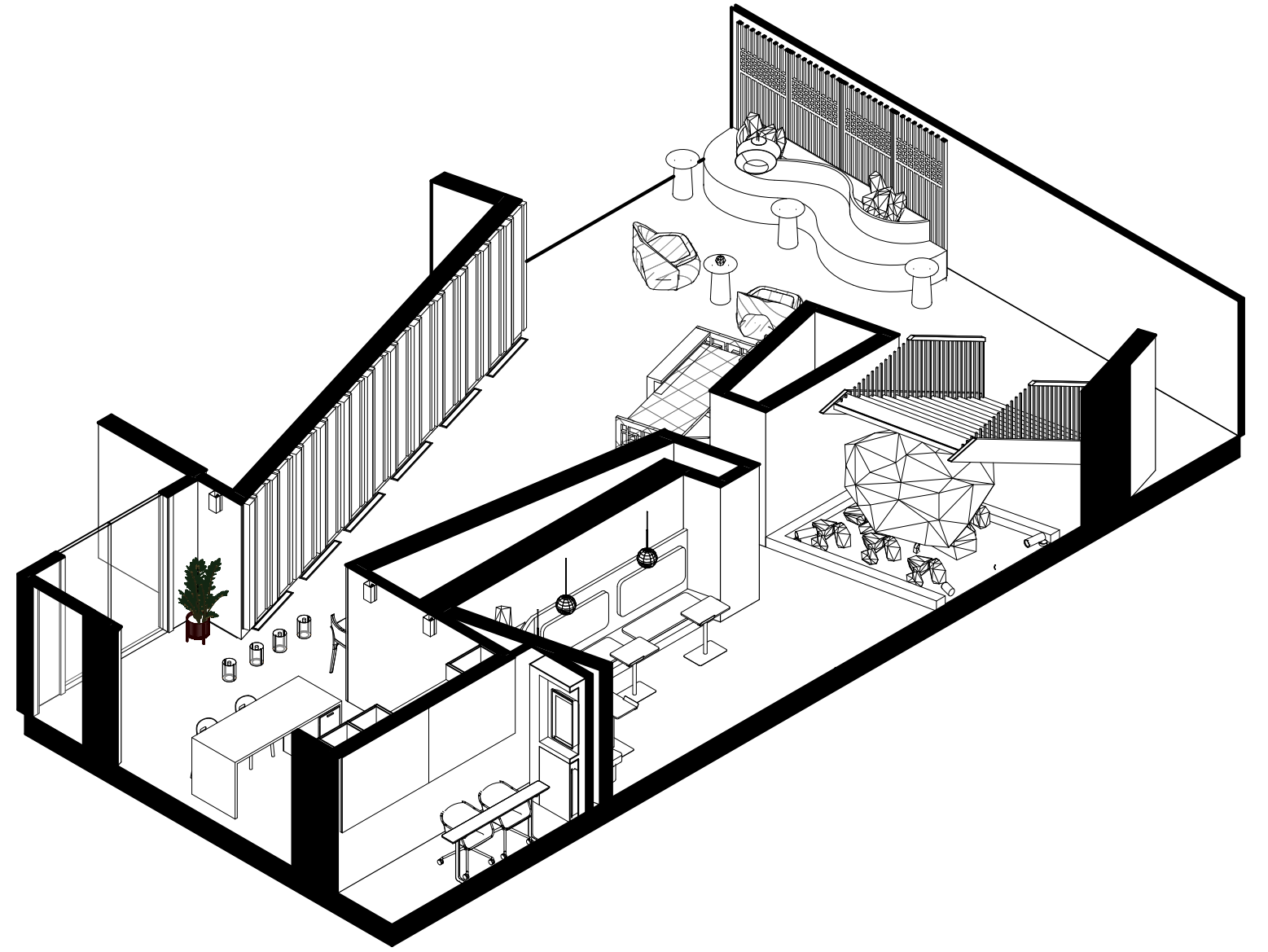
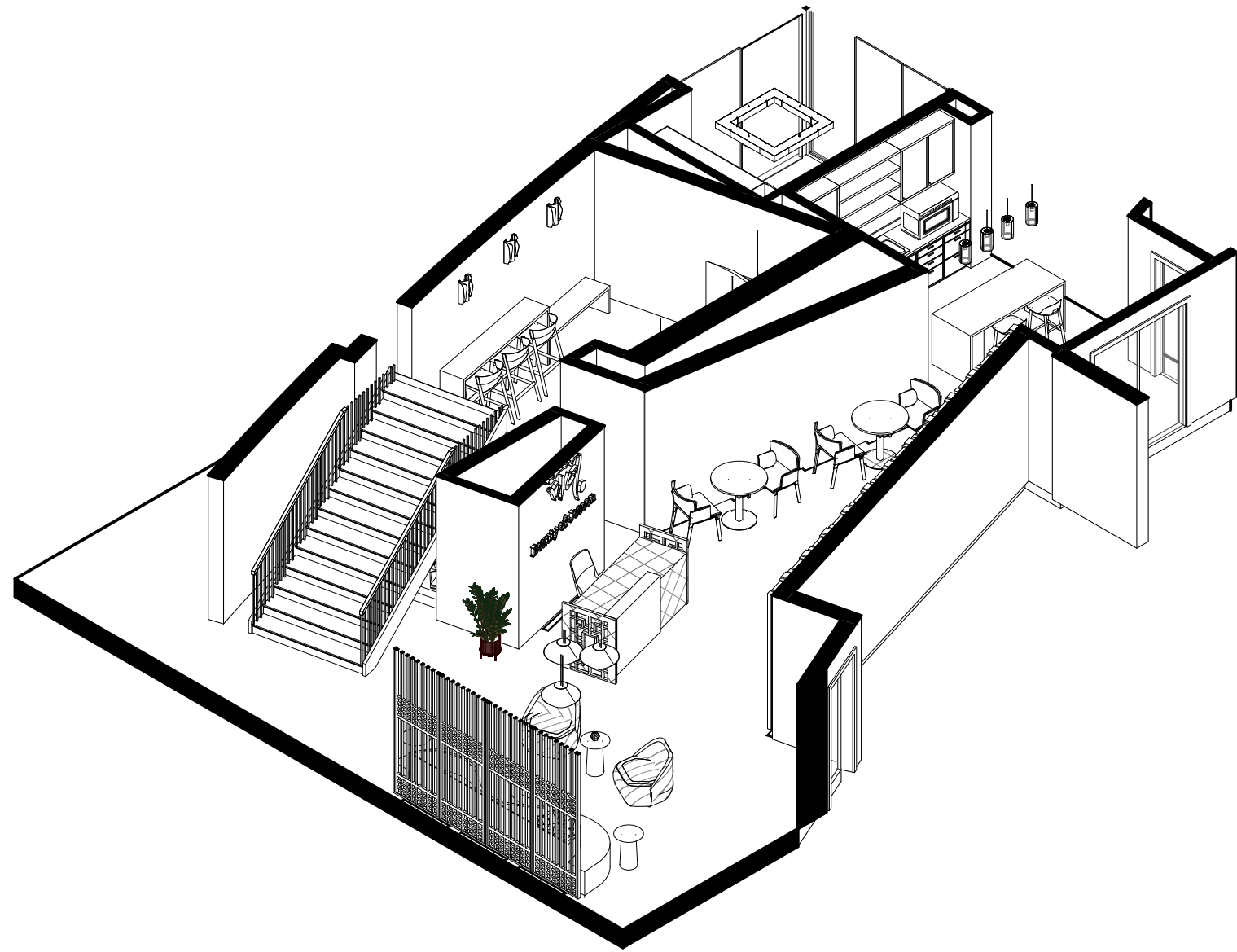
ELEVATION - BREAK ROOM



- ① LAMINART CAFE MAPLE VENEER
- ② INAX ACCORDI-M TILE
- ③ ULINE UNDER THE COUNTER FRIDGE
- ④ MICROWAVE



AXONOMETRIC VIEWS





조선미역

Beauty of Joseon

조선의 아름다움

Beauty of Joseon

